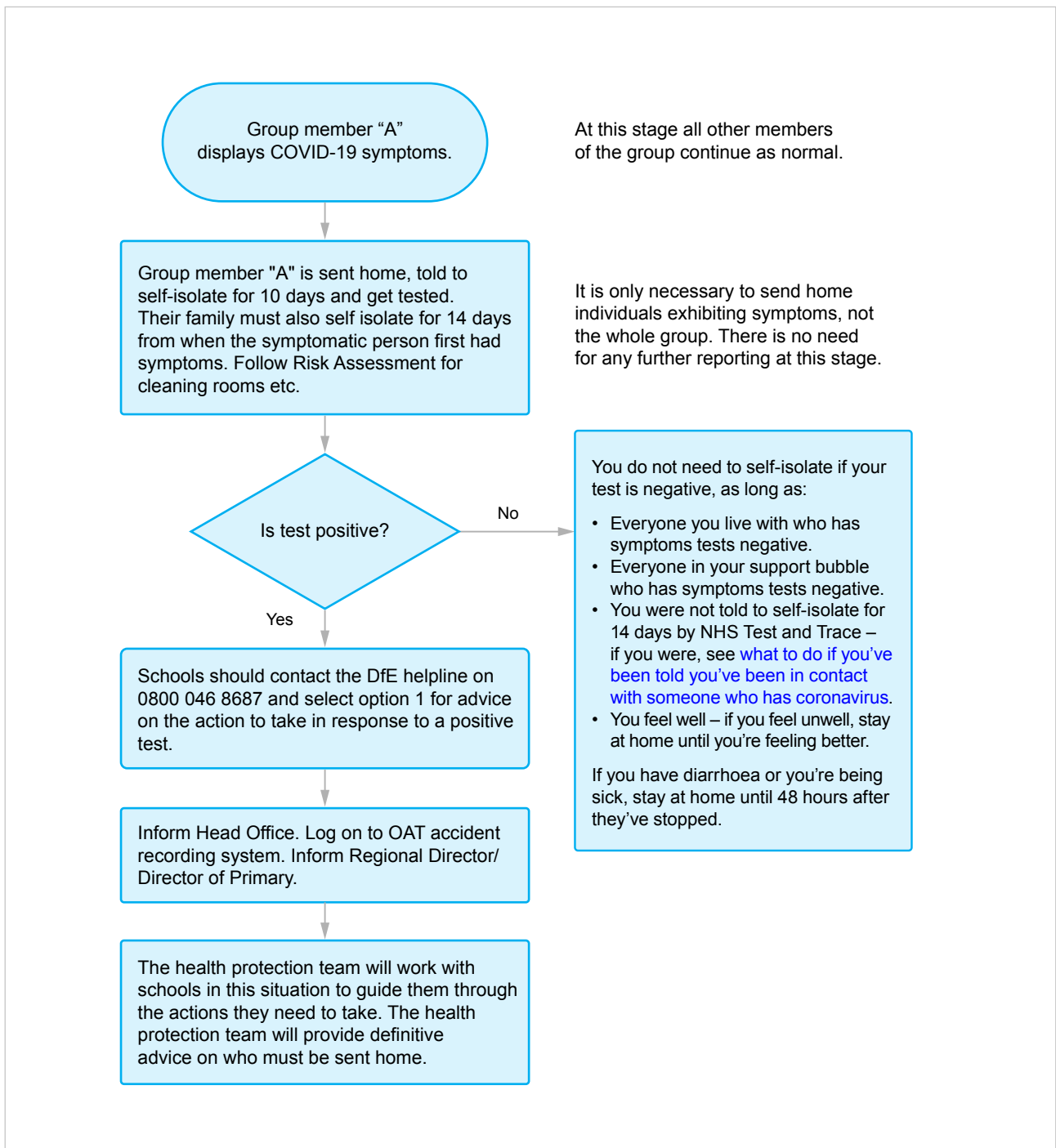


The following guidance is based on information provided by the Department for Education and Public Health England. Last reviewed 17 September 2020.

Link to the original guidance (Last reviewed 17 September 2020) [here](#).

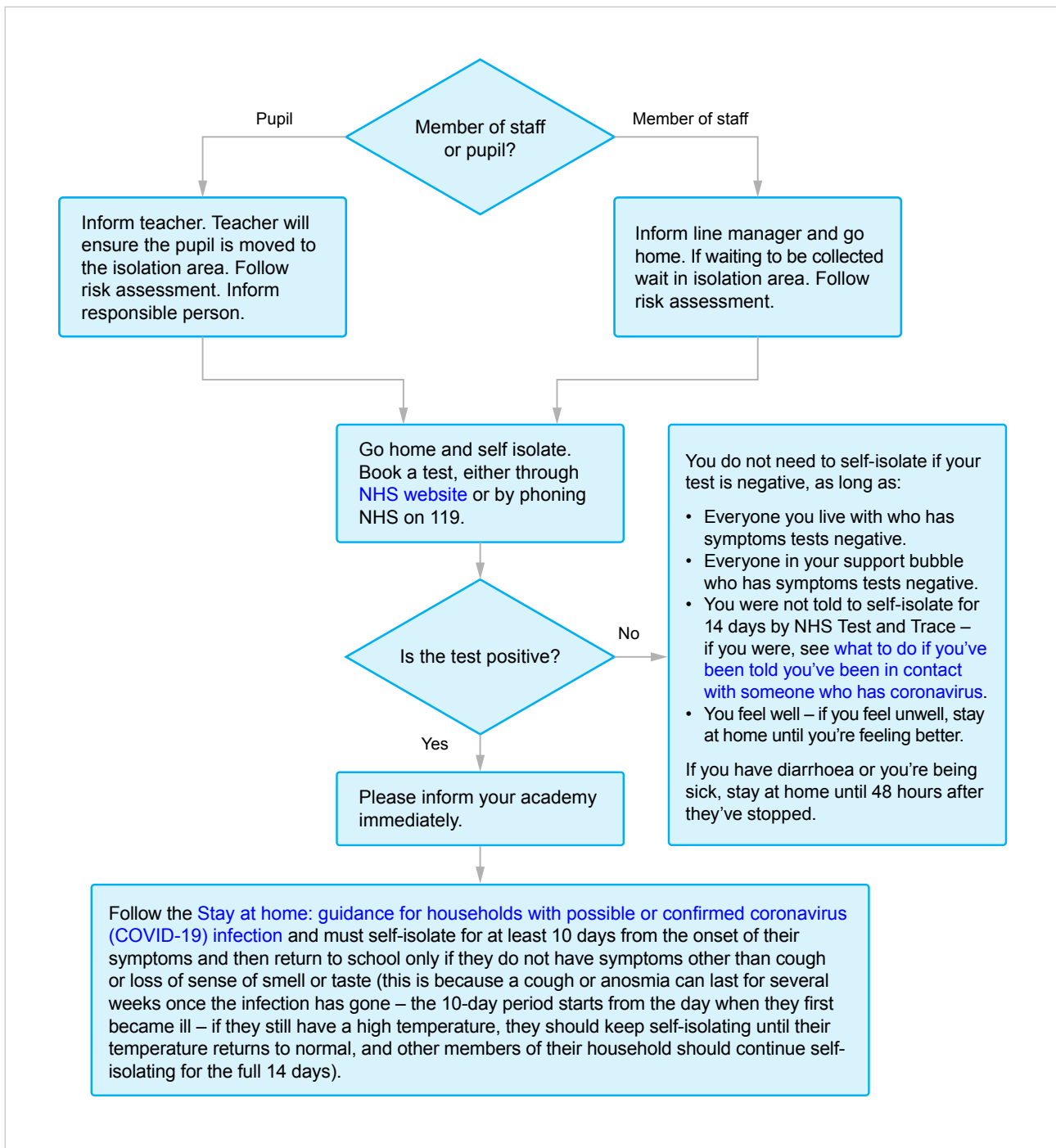
Government guidance encourages minimising contact by grouping staff and pupils.



## Guidance for individual who are exhibiting symptoms of COVID-19

COVID-19 Symptoms are:

- a high temperature
- a new, continuous cough
- or a loss or change to your sense of smell or taste



## If you have been contacted by the Test and Trace Service and told to self-isolate

Guidance for an individual who has been informed by the Test and Trace service that they must self-isolate because they have been in contact with someone suspected of having COVID-19.

